



lighting control

www.visualproductions.nl



DaliCore

The **DaliCore** is an application lighting controller that supports DALI, DT-6, DT-8 and - pending a software upgrade - also supports DALI-2. An ideal solution for a stand-alone DALI installation as the **DaliCore** takes care of the commissioning and daily control of the DALI fixtures.

Featuring a bi-directional DMX port, the **DaliCore** is capable of controlling hybrid systems containing both DALI and DMX luminaries.

B-Station2

The **B-Station2** is a wall-mount button panel with 6 push-buttons. It can remote control the **CueCore**, **DaliCore**, **IoCore** or **LPU-2**. The buttons have a RGB light-ring and can provide visual feedback, for example, to indicate the selected cue or active show. Multiple units can be networked together.

The **B-Station2** fits European and North American gang boxes. Easy to wall-mount, even when no gang box is available. The **B-Station2** contains an inbuilt lighting controller that is sufficient for small architectural projects.



DALI

Control up to 64 DALI fixtures including DT-8 and interact with DALI actuators and sensors. Commission fixtures, set addresses and groups.



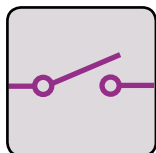
DMX

Control DMX fixtures, use DMX to trigger DALI scenes or convert between DMX and DALI.



RDM

Discover RDM capable DMX fixtures and set their starting addresses remotely. RDM sensor readings are displayed in the web-GUI.



GPI

The GPI port features 4 dry contact-closures, which can trigger any event within the DaliCore. The ports can also be set to 0-10V level input.



Ethernet

Plug into the ethernet network and extend the DaliCore by connecting to B-Station, CueCore, IoCore or Kiosc.



6 Push-Buttons

The buttons are lit by RGB LEDs. There is complete freedom in choosing which function is assigned to the buttons.



Stand-Alone Controller

Control small architectural installations stand-alone with the inbuilt lighting controller for 32 fixtures and 6 zones, including FX Generator.



Control AV equipment

B-Station2 speaks many protocols that are popular in systems integration. Compatible with equipment like media players and show control.



Multi Protocol

Support for various protocols including DMX-512 and Ethernet based protocols such as Art-Net, sACN, UDP & OSC.



Power over Ethernet

This device is conveniently powered by PoE (Power over Ethernet). No separate power supply is needed. The B-Station2 uses PoE Class I.

CUECORE2

ARCHITECTURAL LIGHTING CONTROLLER

QUADCORE

ARCHITECTURAL LIGHTING CONTROLLER



CueCore2

The **CueCore2** is a 1,024 DMX channel lighting controller for permanent installations. The device is completely solid-state, with no moving parts. It is an extremely secure and low-maintenance installation control solution that has only a minimal power consumption.

All operating and programming is done through its dynamic web interface. Each **CueCore2** includes a 2-universe licence for the **CueluxPro** software.

QuadCore

The **QuadCore** is a solid-state lighting controller that features 2,048 DMX channels across 4 DMX outputs. The onboard flash memory allows for storing DMX shows.

The **QuadCore** includes a 4-universe license of **CueluxPro**. Larger universe numbers are achieved by stacking more **QuadCores**. Targeted at channel hungry projects that typically involve pixel mapping, the **QuadCore** reduces the cost per DMX universe.



Stand-Alone Playback

Simultaneous playback of dynamic DMX shows or static lighting scenes. They can be recorded from DMX, Art-Net, sACN or CueluxPro.



Show Control

Events can be triggered via weekdays, date, time, sunrise, sunset, DMX, Art-Net, sACN, HTML, TCP, UDP and OSC.



Timecode

Trigger events or synchronise playback by timecode. Both units support Art-Net, CueCore2 also features SMPTE and MTC.



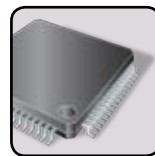
MIDI (CueCore2 only)

IN and OUT port supporting MIDI, MSC and MMC. Incoming messages can be used to trigger functions within the CueCore2.



GPI (CueCore2 only)

The GPI port features 4 dry contact-closures, which can trigger any event within the CueCore2. The ports can also be set to 0-10V level input.



Solid-State

The units are constructed without any moving part or forced cooling. Data is securely stored in onboard flash. Designed for maximum reliability.



Internal Clock

The internal clock is used for scheduling events based on time, date or weekday. NTP is supported for synchronising with an external server.



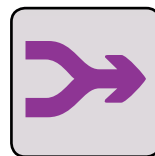
Master-Slave

Multiple Cores can easily be used together. Only the master needs to have its triggers programmed, the slaves will follow in sync.



Ethernet-DMX node

The devices can also function as a 2- or 4-universe bi-directional Ethernet to DMX node. It supports Art-Net, sACN and KiNet.



DMX Merging

The QuadCore can merge incoming data from DMX, Art-Net and sACN. The merging behaviour can be determined by setting the HTP, LTP or Priority.



IoCore2

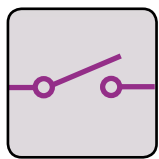
The **IoCore2** is an expansion module in the product family of solid-state lighting controllers. It offers interfacing to digital and analogue inputs and digital outputs and supports various other protocols that are common in lighting and show control.

The compact and versatile **IoCore2** is the ideal expansion for the **CueCore** and **QuadCore** in projects that demand more IO. Furthermore, **IoCore2** is equally well suited for stand-alone IO interfacing or working together with any third-party show control system.

TimeCore

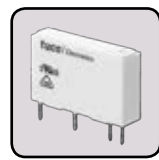
Entertainment shows and themed environments require various show-disciplines like sound, lighting, video, animatronics and pyrotechnics to be synchronised.

The **TimeCore** is a one-stop toolbox for timecode; it is a simple and reliable device for generating, following and converting various timecode protocols; both traditional protocols like SMPTE and MTC as well as new Ethernet-based protocols. The **TimeCore** is also capable of sending and receiving popular show control protocols.



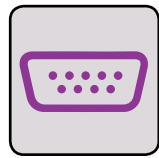
Inputs

The eight GPI ports can be configured as digital contact-closures, or as analog 0-10V level inputs ideal for sensors.



Outputs

The IoCore2 features eight GPO ports. These ports are relays for creating pulses on contact-closures or switching external equipment.



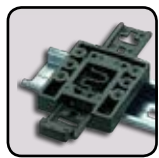
RS-232

The bi-directional serial port allows integration with legacy equipment. RS-232 can be used for triggering and conversions.



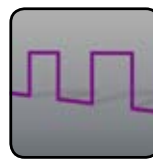
DMX

The DMX port is switchable between input and output. It can be used for conversion (e.g. GPI->DMX) or triggering (e.g. DMX->RS-232).



DIN Rail

The desktop IoCore can be easily mounted on a DIN rail by using the optional DIN rail mount adapter.



Generator

The TimeCore can be set to be a timecode master, generating a stable timecode signal. The device can also be set as a timecode slave.



Convertor

The TimeCore is capable of converting between any of the SMPTE, MTC and Art-Net timecode protocols and frame-rate.



Display

A large LED display gives a real-time readout on the current timecode frame. The timecode can also be monitored via the web-interface.



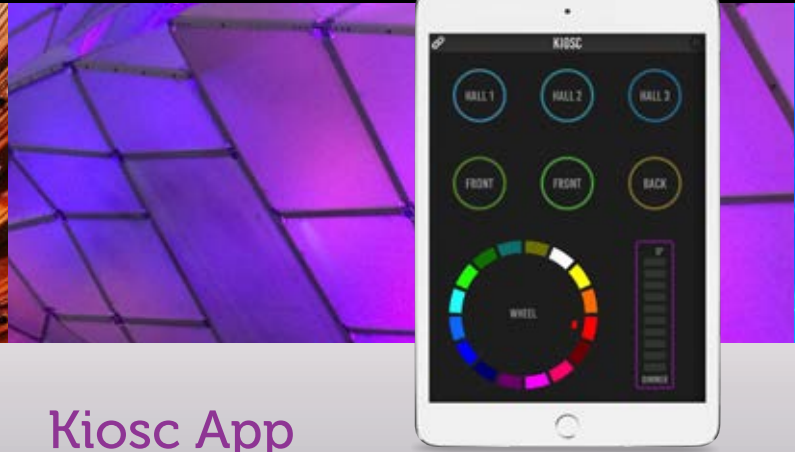
Show Control

The inbuilt event-system facilitates responding to incoming signals and timecode events, making it a simple solid-state show controller.



Ethernet

The TimeCore has an Ethernet port that allows you to access the internal web-server; enabling you to configure the behaviour of the device.



Kiosc Touch

Kiosc Touch is a wall-mount touch screen display. With the **Kiosc** app pre-installed, it is plug & play device for systems integration. The 7 inch resistive touch screen with a 800x480 resolution will enable you to create a control dashboard tailored to your project. You can design the layout as simple, or as elaborate, as you wish. **Kiosc Touch** fits European and North American gang boxes.

Kiosc App

Kiosc is an app for creating custom touch screen user-interfaces for the **Visual Productions'** range of lighting controllers. **Kiosc** is designed to have no editing capability, making it a fool-proof interface that can safely be presented to non-technical operators. **Kiosc** is also the perfect choice for remote controlling any 3rd party AV equipment as it supports OSC and UDP; which are popular protocols in the world of system integration and show control.



Custom Logo

Enrich the graphical user interface with your custom images like company logos or project specific graphics.



Lighting GUI

Kiosc provides you with a Graphical User Interface that is perfect for controlling lighting installations.



Power over Ethernet

This device is conveniently powered by PoE (Power over Ethernet). No separate power supply is needed. **Kiosc Touch** uses PoE Class III.



Editor

Kiosc is accompanied by the **Kiosc Editor** which enables you to easily design custom layouts including the use of images and logos.

RdmSplitter (Terminal)

Optically isolated splitter for distributing and boosting DMX-512 signals.



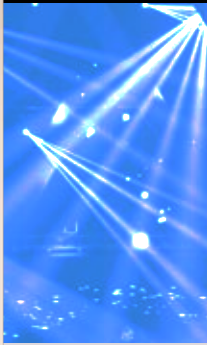
- 6 DMX-512 Outputs
- RDM
- Optical isolation per port
- Terminal connectors
- DIN Rail mounted
- 9-24V DC

RdmSplitter (RJ-45)

Optically isolated splitter for distributing and boosting DMX-512 signals.



- 6 DMX-512 Outputs
- RDM
- Optical isolation per port
- RJ-45 connectors
- DIN Rail mounted
- 9-24V DC



Cuety

Cuety is a new generation lighting controller that turns your iPad or Android tablet into a powerful lighting console. Easy to use and budget friendly, Cuety enables you to take full advantage of the tablets mobility and multi-touch display. The controller has full support for moving heads, LEDs, conventional lighting and DMX controlled special effects.



LPU

The Cuety app requires the LPU-1 or LPU-2. This device is connected via Ethernet and offers a optically isolated DMX-512 port.



Architecture

The system architecture of the Cuety and LPU is designed for robustness. The LPU contains the engine that runs your show, calculates fade times and renders dynamic FXs. The App is your user-interface.



Cuelist

Cuety adapts the cuelist-based system standard to the professional lighting industry. You will be programming your lights according to the same workflow that LDs use for stadium-size events. Cuety just simplifies it.



FX

An inbuilt FX generator provides you with automatic movements for pan & tilt, various intensity chases and colourful RGB effects. The FX generator can be tweaked by changing its speed, size and phase parameters.



Remote

The Cuety Remote is a simple and intuitive app for your iPhone. It allows you to remote control your LPU. You can use it to call up your pre-programmed cues with-out the risk of inadvertently making a change.

	LPU-1	LPU-2
Market	Entertainment	Installation
DMX Channels	512	512
Fixtures	64	64
Playbacks	64	64
Cues per Playback	48	48
FX Generator	✓	✓
Personality Files	4500+	4500+
HTTP		✓
TCP		✓
UDP		✓
OSC		✓

