

Introduction

SINCE 1980	05
RELIABILITY EXPERTISE	07
VALUE CHAIN	09
COSTUMIZATION	11
DURABILITY	13
SUSTAINABILITY	15
PASSION	17

Underwater series

DIVE	19
AKHELIOS	21
DONUT	23

Outdoor series

HELIOS	25
DOCTUS	27
BRICK	31
HI-LINE	33
FOCUS	39

Indoor series

FOCUS	41
VICE	43
FREELINE	45
ACCESSORIES	47

Lighting control system

DRIVENET	51
SYSTEM INTEGRATION	53
NOTE	55

Name Glossary

.d

Products marked with “**.d**” extension, are products that have RDM/DMX PCB on board and which only need to be connected to RDM/DMX signal and power supply.

.s

Products marked with “**.s**” extension, are products that have PSU and RDM/DMX PCB on board and which only need to be connected to RDM/DMX signal and power cable.

.i or .o

Products marked with “**.i** or **.o**” extension, are products that can be used indoors or outdoors respectively according to their IP rating.

plug in

Products with the “**plug in**” extension, are easy-to-operate products that need only the power supply (constant voltage).

white

Products with the “**white**” extension, are products with a white light source, which can be different in intensity and CCT (Correlated Color Temperature).

full color

Products with the “**full color**” extension, are products with a light source colors in a single lens, with high color mixing.

zoom

Products with the “**zoom**” extension, are products with a zoomable optics.

evo

Products with the “**evo**” extension, are products with integrated pixel control.



SINCE 1980

DTS was founded in 1980 with the aim of giving shape to the dream of its founder Dante Latteo “...to capture the beauty of colors and the charm of light in an object, to be used according to one’s own desire.”

This is how the company comes to life. Step by step, the mission of DTS is to reproduce the perfection of the spectacle of nature, making it accessible to all through innovative and highly technological tools: headlights.

Since then, every ray of light produced has been meticulously cared for. The experience gained over the years has led to the creation of products that are increasingly more efficient, able to guarantee.

reliability expertise

homogeneous colors and flawless results over time, capable of creating uniform lighting scenarios with great impact, indispensable for high-level events and breathtaking settings.

The long-standing presence of DTS on the market has also allowed the company to be able to seize and anticipate changes and new needs over time. We are ISO 9001:2015 certified and recognized by an increasing number of architects, light designers, distributors and system integrators as the industry benchmark for quality and innovation



The medieval tower, the highest in Italy and symbol of Bologna, is a universally known monument. X BRICK and BRICK proved to be the perfect choice for this installation that respected both the original colour of the bricks and the city's desire for innovation, curious to see its symbol in a new light.

Medieval 'Asinelli Tower' - Bologna (ITALY)



VALUE CHAIN

agility chain made in Italy

From the concept to final testing, every step of the production process is carried out in-house, ensuring not only highest quality but also an unmatched agility in responding to customer requests.

Our chain, concentrated in an area composed of three factories, allows us to eliminate the time required for product transfer, to avoid communication errors related to coordination between multiple sites and to cancel the higher costs related to logistics and external quality controls.

The fragmentation of the production chain inevitably reflects on the customer, increasing waiting times and overall costs, even more when customs duties are imposed between the various stages of products development. Our choice allows us to avoid all obstacles, ensuring a more lean, economical and, above all, reliable process.

opportunity specific need

In keeping with the complete control of the internal production chain and the advantages that result from it, we are able to offer tailor-made solutions to meet every specific need.

Whether it is modifications to standard products or the development of custom projects for small events, luxury architecture and outdoor private areas, our departments work in harmony so that the request is met in full respect of the needs and time.


Moreover, unlike companies that force clients to buy large volumes, the presence of all phases in a single area allows us to realize even small customized quantities, avoiding complex and expensive prototyping steps. This approach not only reduces the costs to the customer, but also has a positive impact on the environment by limiting overproduction and reducing waste.

With us, every client is certain to obtain customized, efficient and sustainable solutions.



CUSTOMIZATION

DURABILITY



Dubai Water Canal is a 2.9 km long structure that links the Business Bay with the Arabic Gulf. One of the main visual attractions of the complex is the giant artificial waterfall 160 meters long of the Sheikh Zayed Dubai. A technological marvel that at night it turns on with the eye-catching magic of dynamic color lighting delivered by 240 HELIOS BRONZE FC units. This DTS underwater spotlights perfectly perform the challenging task of creating a water body that did not exist anywhere else in the world.

Sheikh Zayed Bridge - Dubai (UAE)

bronze
marine

excellent
materials

The quality and durability of our headlights are guaranteed by the use of excellent materials, carefully chosen to withstand the most severe weather and environmental conditions. 316L stainless steel, marine bronze and the latest generation of LED lights are just some of the elements that ensure a long life to our products.

In particular, marine bronze, used for underwater spotlights, offers a very high resistance to corrosion even in extreme environments, minimizing the need for maintenance. This results in both economic and operational savings in the long term, with clear benefits for the environment thanks to the reduction of wastefulness and minimization of rubbish.

Relying on our headlights means making a long-term investment that continues to offer excellent performance year by year, without ever letting you down.



long-lasting value

For us, innovating means creating solutions capable of meeting the needs of a market that changes over time, while always maintaining efficiency of use and integrity of outer appearance.

This philosophy allows us not only to significantly reduce waste, but also to offer solutions that represent real sustainability. Our headlights are not short-term consumer products, intended to be replaced every year in function of a precise marketing strategy. They will not disappear from the market or be scrapped, depriving customers of the possibility to find spare parts or forcing them to switch to later models. On the contrary, our policy is to minimize total cost of ownership (TCO).

For those who invest in the lighting sector and especially in the world of Architainment, sustainability takes on a concrete meaning: the possibility to create solid projects with lasting value, with consequent benefits both economic and environmental.



SUSTAINABILITY

PASS

A photograph of an ornate theater interior. The scene is dominated by a large, multi-tiered chandelier with numerous glowing lights, positioned in the upper right. The theater's architecture features intricate woodwork and decorative elements. In the foreground, the dark silhouette of a person's head and shoulder is visible on the right side, looking towards the stage. The overall lighting is warm and dramatic, highlighting the architectural details and the texture of the theater's interior.

ION

more than just a product

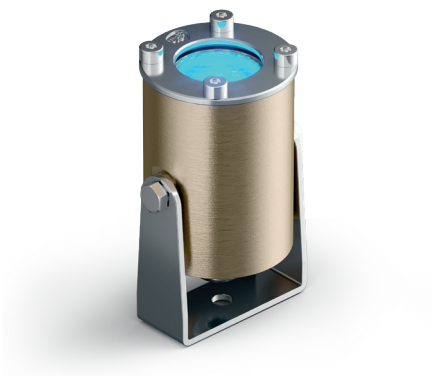
In every headlight we make, there is something more than just technology.

Every step of the process is the fruit of our passion and dedication, because for us it's not just about creating tools: we want to give life something that transmits emotions and tells stories through light and its colors.

Because when you put your soul in... the result is simple to see! It's life. It's emotion.



UNDERWATER

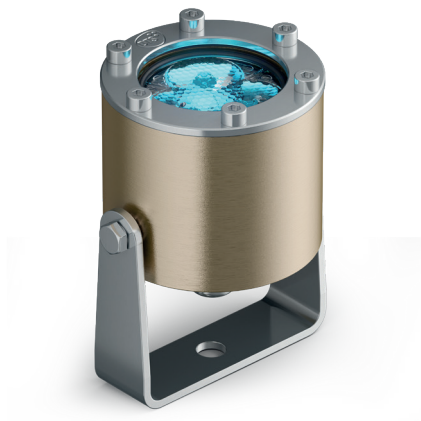


DIVE 1 full color

H 86 mm	L 56 mm	D 46 mm
LED source	RGBW - 415 lumen	
Installation unit x output	24 Vdc 700ma	6 pcs
	48 Vdc 700ma	12 pcs

PSU constant current	Remote with Drivenet
Finiture	316L Steel and bronze
Optics	10° - 25° - 40°
Filters	On demand

Code	03.LPB006E99FC	10	spot
		25	medium
		40	wide

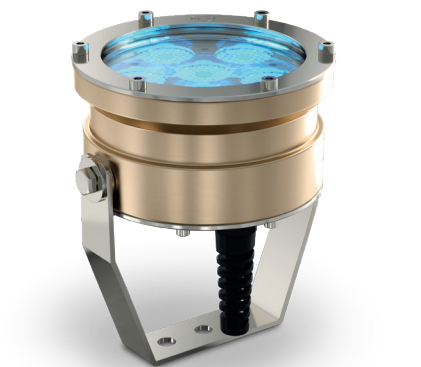


DIVE 3 full color

H 116 mm	L 92 mm	D 75 mm
LED source	RGBW - 1245 lumen	
Installation unit x output	24 Vdc 700ma	2 pcs
	48 Vdc 700ma	4 pcs

PSU constant current	Remote with Drivenet
Finiture	316L Steel and bronze
Optics	10° - 25° - 40°
Filters	On demand

Code	03.LPB011E99FC	10	spot
		25	medium
		40	wide

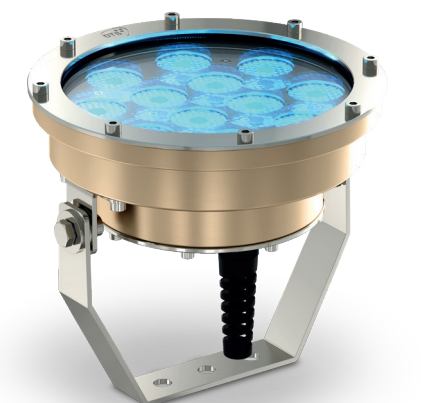


DIVE 6 N full color

H 173 mm	L 153 mm	D 139 mm
LED source	RGBW - 2300 lumen	
Installation unit x output	24 Vdc 700ma	1 pcs
	48 Vdc 700ma	2 pcs

PSU constant current	Remote with Drivenet
Finiture	316L Steel and bronze
Optics	10° - 25° - 40°
Filters	On demand

Code	03.LPB101E99FC	10	spot
		25	medium
		40	wide



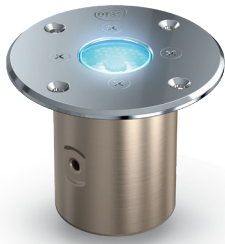
DIVE 12 N full color

H 182 mm	L 195 mm	D 195 mm
LED source	RGBW - 4580 lumen	
Installation unit x output	24 Vdc 1400ma	1 pcs
	48 Vdc 700ma	1 pcs

PSU constant current	Remote with Drivenet
Finiture	316L Steel and bronze
Optics	10° - 25° - 40°
Filters	On demand

Code	03. LIB only for 48Vdc	100E99FC	10	spot
	LPB only for 24Vdc		25	medium
			40	wide



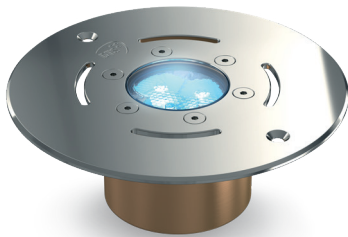


AKHELIOS 1 full color

H 72 mm	L 75 mm	D 75 mm
LED source	RGBW - 415 lumen	
Installation unit x output	24 Vdc 700ma	6 pcs
	48 Vdc 700ma	12 pcs

PSU constant current	Remote with Drivenet
Finiture	316L Steel and bronze
Optics	10° - 25° - 40°
Filters	On demand

Code	03.LPS006E99FC	10	spot
		25	medium
		40	wide

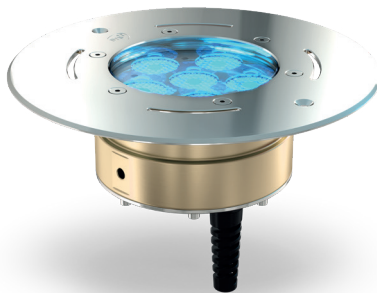


AKHELIOS 3 full color

H 84 mm	L 165 mm	D 165 mm
LED source	RGBW - 1245 lumen	
Installation unit x output	24 Vdc 700ma	2 pcs
	48 Vdc 700ma	4 pcs

PSU constant current	Remote with Drivenet
Finiture	316L Steel and bronze
Optics	10° - 25° - 40°
Filters	On demand

Code	03.LPS011E99FC	10	spot
		25	medium
		40	wide

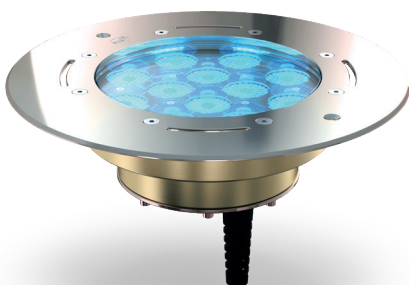


AKHELIOS 6 N full color

H 152 mm	L 235 mm	D 235 mm
LED source	RGBW - 2350 lumen	
Installation unit x output	24 Vdc 700ma	1 pcs
	48 Vdc 700ma	2 pcs

PSU constant current	Remote with Drivenet
Finiture	316L Steel and bronze
Optics	10° - 25° - 40°
Filters	On demand

Code	03.LPS101E99FC	10	spot
		25	medium
		40	wide



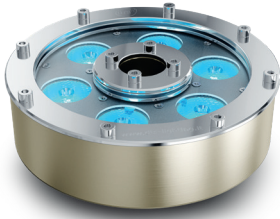
AKHELIOS 12 N full color

H 153 mm	L 275 mm	D 275 mm
LED source	RGBW - 4580 lumen	
Installation unit x output	24 Vdc 1400ma	1 pcs
	48 Vdc 700ma	1 pcs

PSU constant current	Remote with Drivenet
Finiture	316L Steel and bronze
Optics	10° - 25° - 40°
Filters	On demand

Code	03. LIS	only for 48Vdc	100E99FC	10	spot
	LPS	only for 24Vdc		25	medium
				40	wide



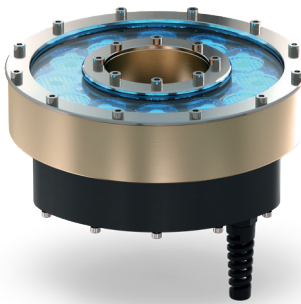


DONUT 6 full color

H 75 mm	D 173 mm	D ₂ 30 mm
LED source	RGBW - 2350 lumen	
Installation unit x output	24 Vdc 700ma	1 pcs
	48 Vdc 700ma	2 pcs

PSU constant current	Remote with Drivenet
Finiture	316L Steel and bronze
Optics	10° - 25° - 40°
Filters	On demand

Code	03.DN004.F	10	spot
		25	medium
		40	wide

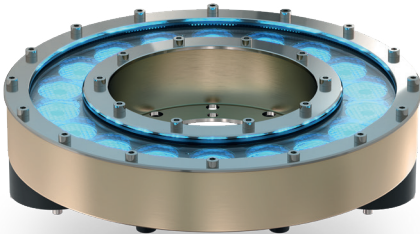


DONUT 12 N full color

H 170 mm	D 223 mm	D ₂ 77 mm
LED source	RGBW - 4700 lumen	
Installation unit x output	24 Vdc 1400ma	1 pcs
	48 Vdc 700ma	1 pcs

PSU constant current	Remote with Drivenet
Finiture	316L Steel and bronze
Optics	10° - 25° - 40°
Filters	On demand

Code	03.DN 008 only for 48Vdc	.F 10	spot
	009 only for 24Vdc	25	medium
		40	wide



DONUT 18 N full color

H 170 mm	D 300 mm	D ₂ 100 mm
LED source	RGBW - 7050 lumen	
Installation unit x 2 output	48 Vdc 700ma	1 pcs

PSU constant current	Remote with Drivenet
Finiture	316L Steel and bronze
Optics	10° - 25° - 40°
Filters	On demand

Code	03.DN010.F	10	spot
		25	medium
		40	wide



OUTDOOR

PSU constant current Remote with Drivenet

Finiture 316L Steel and Anodized Aluminium

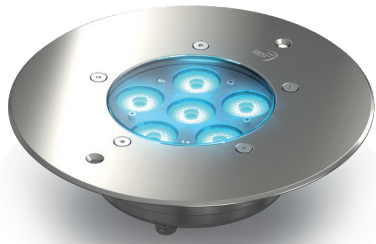
Optics 10° - 25° - 40°

HELIOS 6 full color

H 78 mm L 235 mm D 235 mm

LED source RGBW - 2350 lumens
RGBA - 2200 lumens

Installation 24 Vdc 700ma 1 pcs
unit x output 48 Vdc 700ma 2 pcs



Code **03.EOS001E 99** 316L Steel and Anodized Aluminium **FC** RGBW **10** spot
FY RGBA **25** medium
40 wide

PSU Remote constant voltage 27-48 Vdc

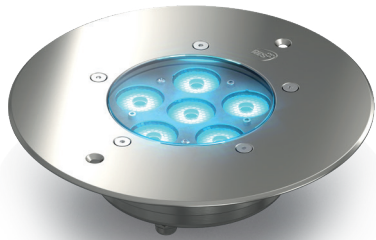
Finiture 316L Steel and Anodized Aluminium

Optics 10° - 25° - 40°

HELIOS.d 6 full color

H 78 mm L 235 mm D 235 mm

LED source RGBW - 2350 lumens
RGBA - 2200 lumens



Code **03.EOS006E 99** 316L Steel and Anodized Aluminium **FC** RGBW **10** spot
FY RGBA **25** medium
40 wide

PSU constant current Remote with Drivenet

Finiture 316L Steel and Anodized Aluminium

Optics 10° - 25° - 40°

HELIOS 9 white

H 78 mm L 235 mm D 235 mm

LED source 3000 K - 2000 lumens
4000 K - 2350 lumens
5600 K - 2500 lumens

Installation 48 Vdc 700ma 4 pcs
unit x output (1 x channel)



Code **03.EOS003E 99** 316L Steel and Anodized Aluminium **WB** 3000K **10** spot
WE 4000K **25** medium
WG 5600K **40** wide



DOCTUS 1



H 114 mm	L 97 mm	D 80 mm
LED source	RGBW - 600 lumens RGBA - 550 lumens 3000K - 660 lumens 4000K - 700 lumens	
Installation unit x output	24 Vdc 700ma	6 pcs
	48 Vdc 700ma	12 pcs

PSU constant current	Remote with Drivenet
Finiture	White Black Silver
Optics	10° - 25° - 40° 40x12° - 12x40°
Anti-glare	Honeycomb

Code	03.DTB002E	06 white	FC RGBW	10 spot	_ no anti-glare
		14 black	FY RGBA	25 medium	A honeycomb
		28 silver	WB 3000K	40 wide	
			WE 4000K	E1 40x12°	
				E2 12x40°	

DOCTUS 3



H 172 mm	L 149 mm	D 124 mm
LED source	RGBW - 1300 lumens RGBA - 1170 lumens 3000K - 2200 lumens 4000K - 2650 lumens	
Installation unit x output	24 Vdc 700ma	2 pcs
	48 Vdc 700ma	4 pcs

PSU constant current	Remote with Drivenet
Finiture	White Black Silver
Optics	10° - 25° - 40° 40x12° - 12x40°
Anti-glare	Honeycomb

Code	03.DTB006E	06 white	FC RGBW	10 spot	_ no anti-glare
		14 black	FY RGBA	25 medium	A honeycomb
		28 silver	WB 3000K	40 wide	
			WE 4000K	E1 40x12°	
				E2 12x40°	

DOCTUS 6



H 167 mm	L 177 mm	D 156 mm
LED source	RGBW - 2400 lumens RGBA - 2160 lumens 3000K - 3600 lumens 4000K - 3900 lumens	
Installation unit x output	24 Vdc 700ma	1 pcs
	48 Vdc 700ma	2 pcs

PSU constant current	Remote with Drivenet
Finiture	White Black Silver
Optics	10° - 25° - 40° 40x12° - 12x40°
Anti-glare	Honeycomb

Code	03.DTB010E	06 white	FC RGBW	10 spot	_ no anti-glare
		14 black	FY RGBA	25 medium	A honeycomb
		28 silver	WB 3000K	40 wide	
			WE 4000K	E1 40x12°	
				E2 12x40°	

DOCTUS 12



H 211 mm	L 227 mm	D 204 mm
LED source	RGBW - 4660 lumens RGBA - 4200 lumens 3000K - 7550 lumens 4000K - 7900 lumens	
Installation unit x output	48 Vdc 700ma	1 pcs

PSU constant current	Remote with Drivenet
Finiture	White Black Silver
Optics	10° - 25° - 40° 40x12° - 12x40°
Anti-glare	Honeycomb

Code	03.DTB014E	06 white	FC RGBW	10 spot	_ no anti-glare
		14 black	FY RGBA	25 medium	A honeycomb
		28 silver	WB 3000K	40 wide	
			WE 4000K	E1 40x12°	
				E2 12x40°	



DOCTUS.d 1 full color

H 114 mm L 97 mm D 80 mm

LED source RGBW - 600 lumens
RGBA - 550 lumens

PSU Remote constant voltage 24-48 Vdc

Finiture White
Black
Silver

Optics 10° - 25° - 40°
40x12° - 12x40°

Anti-glare Honeycomb

Code **03.DTB004E** **06** white **FC** RGBW **10** spot _ no anti-glare
14 black **FY** RGBA **25** medium **A** honeycomb
28 silver **40** wide
E1 40x12°
E2 12x40°



DOCTUS.d 3 full color

H 172 mm L 149 mm D 124 mm

LED source RGBW - 1300 lumens
RGBA - 1170 lumens

PSU Remote constant voltage 24-48 Vdc

Finiture White
Black
Silver

Optics 10° - 25° - 40°
40x12° - 12x40°

Anti-glare Honeycomb

Code **03.DTB008E** **06** white **FC** RGBW **10** spot _ no anti-glare
14 black **FY** RGBA **25** medium **A** honeycomb
28 silver **40** wide
E1 40x12°
E2 12x40°



DOCTUS.d 6 full color

H 167 mm L 177 mm D 156 mm

LED source RGBW - 2400 lumens
RGBA - 2160 lumens

PSU Remote constant voltage 35-48 Vdc

Finiture White
Black
Silver

Optics 10° - 25° - 40°
40x12° - 12x40°

Anti-glare Honeycomb

Code **03.DTB012E** **06** white **FC** RGBW **10** spot _ no anti-glare
14 black **FY** RGBA **25** medium **A** honeycomb
28 silver **40** wide
E1 40x12°
E2 12x40°



DOCTUS.d 12 full color

H 211 mm L 227 mm D 204 mm

LED source RGBW - 4660 lumens
RGBA - 4200 lumens

PSU Remote constant voltage 35-48 Vdc

Finiture White
Black
Silver

Optics 10° - 25° - 40°
40x12° - 12x40°

Anti-glare Honeycomb

Code **03.DTB016E** **06** white **FC** RGBW **10** spot _ no anti-glare
14 black **FY** RGBA **25** medium **A** honeycomb
28 silver **40** wide
E1 40x12°
E2 12x40°

DOCTUS 1 plug in



H 114 mm L 97 mm D 80 mm
LED source 3000K - 660 lumens
4000K - 700 lumens

PSU Remote constant voltage 24 Vdc
Finiture White
Black
Silver
Optics 10° - 25° - 40°
40x12° - 12x40°
Anti-glare Honeycomb

Code **03.DTB018E** **06** white **WB** 3000K **10** spot **_** no anti-glare
14 black **WE** 4000K **25** medium **A** honeycomb
28 silver **40** wide
E1 40x12°
E2 12x40°

DOCTUS 3 plug in



H 172 mm L 149 mm D 124 mm
LED source 3000K - 2200 lumens
4000K - 2650 lumens

PSU Remote constant voltage 24 Vdc
Finiture White
Black
Silver
Optics 10° - 25° - 40°
40x12° - 12x40°
Anti-glare Honeycomb

Code **03.DTB019E** **06** white **WB** 3000K **10** spot **_** no anti-glare
14 black **WE** 4000K **25** medium **A** honeycomb
28 silver **40** wide
E1 40x12°
E2 12x40°

DOCTUS.s 6 full color



H 167 mm L 177 mm D 156 mm
LED source RGBW - 2400 lumens
RGBA - 2160 lumens

PSU Remote constant voltage 35-48 Vdc
Finiture White
Black
Silver
Optics 10° - 25° - 40°
40x12° - 12x40°
Anti-glare Honeycomb

Code **03.DTBH11S** **06** white **FC** RGBW **10** spot **_** no anti-glare
14 black **FY** RGBA **25** medium **A** honeycomb
28 silver **40** wide
E1 40x12°
E2 12x40°

Hybrid connectors IP67 rated with water-proof caps
(also available with end-stripped cables for: Power IN; DMX IN/OUT).

DOCTUS.s 12 full color



H 211 mm L 227 mm D 204 mm
LED source RGBW - 4660 lumens
RGBA - 4200 lumens

PSU Remote constant voltage 35-48 Vdc
Finiture White
Black
Silver
Optics 10° - 25° - 40°
40x12° - 12x40°
Anti-glare Honeycomb

Code **03.DTBH15S** **06** white **FC** RGBW **10** spot **_** no anti-glare
14 black **FY** RGBA **25** medium **A** honeycomb
28 silver **40** wide
E1 40x12°
E2 12x40°

Hybrid connectors IP67 rated with water-proof caps
(also available with end-stripped cables for: Power IN; DMX IN/OUT).



BRICK 12



H 248 mm L 294 mm P 147 mm
 LED source RGBW - 5800 lumens
 RGBA - 5448 lumens

PSU + Control	Onboard
Finiture	Silver white black
Optics	08° - 10° - 25° - 40°

Code	03.LDB125S	06 white	FC RGBW	08 ultra narrow
		14 black	FY RGBA	10 narrow
		28 silver		25 medium
				40 wide

BRICK 24



H 248 mm L 439 mm P 147 mm
 LED source RGBW - 11500 lumens
 RGBA - 10800 lumens

PSU + Control	Onboard
Finiture	Silver white black
Optics	08° - 10° - 25° - 40°

Code	03.LDB105S	06 white	FC RGBW	08 ultra narrow
		14 black	FY RGBA	10 narrow
		28 silver		25 medium
				40 wide

BRICK 32



H 313 mm L 439 mm P 160 mm
 LED source RGBW - 15300 lumens
 RGBA - 14400 lumens

PSU + Control	Onboard
Finiture	Silver white black
Optics	08° - 10° - 25° - 40°

Code	03.LDB134S	06 white	FC RGBW	08 ultra narrow
		14 black	FY RGBA	10 narrow
		28 silver		25 medium
				40 wide





HI-LINE 30 white

H 104 mm	L 314 mm	P 90 mm
LED source	3000 K - 2720 lumens 4000 K - 3180 lumens 5000 K - 3500 lumens	
Installation unit x output	24 Vdc 700ma	2 pcs
	48 Vdc 700ma	4 pcs

PSU	Remote with Drivenet
Finiture	Silver - White - Black
Optics	11° - 30° - 45° - 65° 40x12° - 12x40° ASY WASH - ASY SPOT

Code	03.HLB000E	06 white	WB 3000K	E1 40X12°
		14 black	WE 4000K	E2 12X40°
		28 silver	WG 5600K	10 Narrow
				11 ASY WASH
				14 ASY SPOT
				25 Medium
				40 Wide
				41 Ultra Wide



HI-LINE 30 full color

H 104 mm	L 314 mm	P 90 mm
LED source	RGBW - 1760 lumen	
Installation unit x output	24 Vdc 700ma	1 pcs
	48 Vdc 700ma	3 pcs

PSU	Remote with Drivenet
Finiture	Silver - White - Black
Optics	10° - 25° - 40° 40x12° - 12x40°

Code	03.HLB000E	06 white	FC full color	E1 40X12°
		14 black		E2 12X40°
		28 silver		10 Narrow
				25 Medium
				40 Wide

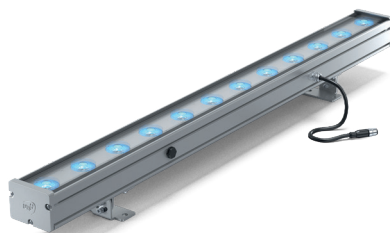


HI-LINE 90 white

H 104 mm	L 894 mm	P 90 mm
LED source	3000 K - 7700 lumens 4000 K - 9000 lumens 5000 K - 9800 lumens	
Installation unit x output	48 Vdc 700ma	1 pcs

PSU	Remote with Drivenet
Finiture	Silver - White - Black
Optics	11° - 30° - 45° - 65° 40x12° - 12x40° ASY WASH - ASY SPOT

Code	03.HLB100E	06 white	WB 3000K	E1 40X12°
		14 black	WE 4000K	E2 12X40°
		28 silver	WG 5600K	10 Narrow
				11 ASY WASH
				14 ASY SPOT
				25 Medium
				40 Wide
				41 Ultra Wide



HI-LINE 90 full color

H 104 mm	L 894 mm	P 90 mm
LED source	RGBW - 4680 lumen	
Installation unit x output	48 Vdc 700ma	1 pcs

PSU	Remote with Drivenet
Finiture	Silver - White - Black
Optics	10° - 25° - 40° 40x12° - 12x40°

Code	03.HLB100E	06 white	FC full color	E1 40X12°
		14 black		E2 12X40°
		28 silver		10 Narrow
				25 Medium
				40 Wide



HI-LINE 30 white

H 126 mm	L 314 mm	P 66 mm
LED source	3000 K - 2720 lumens 4000 K - 3180 lumens 5000 K - 3500 lumens	
Installation unit x output	24 Vdc 700ma	2 pcs
	48 Vdc 700ma	4 pcs

PSU	Remote with Drivenet
Finiture	Silver - White - Black
Optics	11° - 30° - 45° - 65° 40x12° - 12x40° ASY WASH - ASY SPOT

Code	03.HLB001E	06 white	WB 3000K	E1 40X12°
		14 black	WE 4000K	E2 12X40°
		28 silver	WG 5600K	10 Narrow
				11 ASY WASH
				14 ASY SPOT
				25 Medium
				40 Wide
				41 Ultra Wide



HI-LINE 30 full color

H 126 mm	L 314 mm	P 66 mm
LED source	RGBW - 1760 lumen	
Installation unit x output	24 Vdc 700ma	1 pcs
	48 Vdc 700ma	3 pcs

PSU	Remote with Drivenet
Finiture	Silver - White - Black
Optics	10° - 25° - 40° 40x12° - 12x40°

Code	03.HLB001E	06 white	FC full color	E1 40X12°
		14 black		E2 12X40°
		28 silver		10 Narrow
				25 Medium
				40 Wide



HI-LINE 90 white

H 126 mm	L 894 mm	P 66 mm
LED source	3000 K - 7700 lumens 4000 K - 9000 lumens 5000 K - 9800 lumens	
Installation unit x output	48 Vdc 700ma	1 pcs

PSU	Remote with Drivenet
Finiture	Silver - White - Black
Optics	11° - 30° - 45° - 65° 40x12° - 12x40° ASY WASH - ASY SPOT

Code	03.HLB101E	06 white	WB 3000K	E1 40X12°
		14 black	WE 4000K	E2 12X40°
		28 silver	WG 5600K	10 Narrow
				11 ASY WASH
				14 ASY SPOT
				25 Medium
				40 Wide
				41 Ultra Wide



HI-LINE 90 full color

H 126 mm	L 894 mm	P 66 mm
LED source	RGBW - 4680 lumen	
Installation unit x output	48 Vdc 700ma	1 pcs

PSU	Remote with Drivenet
Finiture	Silver - White - Black
Optics	10° - 25° - 40° 40x12° - 12x40°

Code	03.HLB101E	06 white	FC full color	E1 40X12°
		14 black		E2 12X40°
		28 silver		10 Narrow
				25 Medium
				40 Wide

HI-LINE.s 30 white

H 184 mm L 326 mm P 80 mm
 LED source 3000 K - 2720 lumens
 4000 K - 3180 lumens
 5000 K - 3500 lumens

PSU + Dali 2 Onboard
 Finiture Silver - White - Black
 Optics 11° - 30° - 45° - 65°
 40x12° - 12x40°
 ASY WASH - ASY SPOT



Code	03.HLB001S	06 white	WB 3000K	E1	40X12°
		14 black	WE 4000K	E2	12X40°
		28 silver	WG 5600K	10	Narrow
				11	ASY WASH
				14	ASY SPOT
				25	Medium
			40	Wide	
			41	Ultra Wide	

HI-LINE.s 30 full color

H 184 mm L 326 mm P 80 mm
 LED source RGBW - 1760 lumen

PSU + Control Onboard
 Finiture Silver - White - Black
 Optics 10° - 25° - 40°
 40x12° - 12x40°



Code	03.HLB001S	06 white	FC full color	E1	40X12°
		14 black		E2	12X40°
		28 silver		10	Narrow
				25	Medium
				40	Wide

HI-LINE.s 90 white

H 178 mm L 894 mm P 80 mm
 LED source 3000 K - 7700 lumens
 4000 K - 9000 lumens
 5000 K - 9800 lumens

PSU + Dali 2 Onboard
 Finiture Silver - White - Black
 Optics 11° - 30° - 45° - 65°
 40x12° - 12x40°
 ASY WASH - ASY SPOT



Code	03.HLB101S	06 white	WB 3000K	E1	40X12°
		14 black	WE 4000K	E2	12X40°
		28 silver	WG 5600K	10	Narrow
				11	ASY WASH
				14	ASY SPOT
				25	Medium
			40	Wide	
			41	Ultra Wide	

HI-LINE.s 90 full color

H 178 mm L 894 mm P 80 mm
 LED source RGBW - 4680 lumen

PSU + Control Onboard
 Finiture Silver - White - Black
 Optics 10° - 25° - 40°
 40x12° - 12x40°



Code	03.HLB101S	06 white	FC full color	E1	40X12°
		14 black		E2	12X40°
		28 silver		10	Narrow
				25	Medium
				40	Wide



HI-LINE.s 30 white

H 184 mm L 326 mm P 80 mm
 LED source 3000 K - 2720 lumens
 4000 K - 3180 lumens
 5000 K - 3500 lumens

PSU + Dali 2 Onboard
 Finiture Silver - White - Black
 Optics 11° - 30° - 45° - 65°
 40x12° - 12x40°
 ASY WASH - ASY SPOT

Code	03.HLB001S	06 white	WB 3000K	E1	40X12°
		14 black	WE 4000K	E2	12X40°
		28 silver	WG 5600K	10	Narrow
				11	ASY WASH
				14	ASY SPOT
				25	Medium
				40	Wide
				41	Ultra Wide



HI-LINE.s 30 full color

H 184 mm L 326 mm P 80 mm
 LED source RGBW - 1760 lumen

PSU + Control Onboard
 Finiture Silver - White - Black
 Optics 10° - 25° - 40°
 40x12° - 12x40°

Code	03.HLB001S	06 white	FC full color	E1	40X12°
		14 black		E2	12X40°
		28 silver		10	Narrow
				25	Medium
				40	Wide



HI-LINE.s 90 white

H 178 mm L 894 mm P 80 mm
 LED source 3000 K - 7700 lumens
 4000 K - 9000 lumens
 5000 K - 9800 lumens

PSU + Dali 2 Onboard
 Finiture Silver - White - Black
 Optics 11° - 30° - 45° - 65°
 40x12° - 12x40°
 ASY WASH - ASY SPOT

Code	03.HLB101S	06 white	WB 3000K	E1	40X12°
		14 black	WE 4000K	E2	12X40°
		28 silver	WG 5600K	10	Narrow
				11	ASY WASH
				14	ASY SPOT
				25	Medium
				40	Wide
				41	Ultra Wide



HI-LINE.s 90 full color

H 178 mm L 894 mm P 80 mm
 LED source RGBW - 4680 lumen

PSU + Control Onboard
 Finiture Silver - White - Black
 Optics 10° - 25° - 40°
 40x12° - 12x40°

Code	03.HLB101S	06 white	FC full color	E1	40X12°
		14 black		E2	12X40°
		28 silver		10	Narrow
				25	Medium
				40	Wide



HI-LINE.s 30 evo full color

H 184 mm L 326 mm P 80 mm
LED source RGBW - 1760 lumen

PSU + Control	Onboard
Finiture	Silver - White - Black
Optics	11° - 30° - 45° - 65° 40x12° - 12x40°

Code	03.HLB002S	06 white	FC full color	E1 40X12°
		14 black		E2 12X40°
		28 silver		10 Narrow
				25 Medium
				40 Wide



HI-LINE.s 30 evo full color

H 184 mm L 326 mm P 80 mm
LED source RGBW - 1760 lumen

PSU + Control	Onboard
Finiture	Silver - White - Black
Optics	10° - 25° - 40° 40x12° - 12x40°

Code	03.HLB003S	06 white	FC full color	E1 40X12°
		14 black		E2 12X40°
		28 silver		10 Narrow
				25 Medium
				40 Wide



HI-LINE.s 90 evo full color

H 178 mm L 894 mm P 80 mm
LED source RGBW - 4680 lumen

PSU + Control	Onboard
Finiture	Silver - White - Black
Optics	11° - 30° - 45° - 65° 40x12° - 12x40°

Code	03.HLB102S	06 white	FC full color	E1 40X12°
		14 black		E2 12X40°
		28 silver		10 Narrow
				25 Medium
				40 Wide



HI-LINE.s 90 evo full color

H 178 mm L 894 mm P 80 mm
LED source RGBW - 4680 lumen

PSU + Control	Onboard
Finiture	Silver - White - Black
Optics	10° - 25° - 40° 40x12° - 12x40°

Code	03.HLB103S	06 white	FC full color	E1 40X12°
		14 black		E2 12X40°
		28 silver		10 Narrow
				25 Medium
				40 Wide





FOCUS.d.o 1 zoom fullcolor

H 144 mm L 110 mm P 188 mm
LED source RGBW - 860 lumen

PSU Remote constant voltage 12-48 Vdc
Finiture Anodized aluminium black
 Anodized aluminium silver
Optics zoom 3,5° / 21°

Code **03.LCB016E** **11** Anodized aluminium black **FC** RGBW **99** zoom 3,5° / 21°
 21 Anodized aluminium silver **FY** RGBA



INDOOR

FOCUS.d.i 1 zoom fullcolor

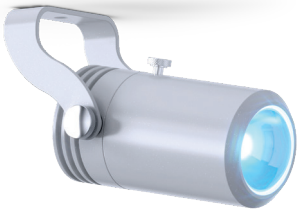
PSU Remote constant voltage 12-48 Vdc

Finiture Silver

H 117 mm L 99.5 mm P 183 mm

Optics Zoom 3,5 / 21°

LED source RGBW - 450 lumen



Code **03.LCB009E** 21 (silver) **FC** RGBW **99** zoom 3,5° / 21°
FY RGBA

INDOOR INSTALLATION IP20

FOCUS





VICE 1 full color

H 88.5 mm	D 64 mm		
LED source	RGBW - 415 lumens		
Installation unit x output	24 Vdc	700ma	6 pcs
	48 Vdc	700ma	12 pcs

PSU	Remote constant voltage 12-48 Vdc
Finiture	white
Optics	25° - 40°

Code	03.LVS004E	03 (white)	FC	RGBW	25 40	Medium Wide
------	-------------------	-------------------	-----------	------	------------------------	----------------

INDOOR INSTALLATION IP20

VICE



PSU	Remote with Drivenet
Finiture	Anodized Aluminium Silver
Optics	10° - 25° - 40° - 58° - 77°

FREELINE 30 white

H 65 mm	L 318 mm	P 51 mm
LED source	3000 K - 1360 lumens 4000 K - 1590 lumens	
Installation unit x output	24 Vdc 700ma	4 pcs 8 pcs (1 x channel)



Code	03.LFB004E 21 anodized aluminium silver	WB 3000 K	10	spot
		WE 4000 K	25	medium
			40	wide
			02	ultrawide
			03	wash

PSU	Remote with Drivenet
Finiture	Anodized Aluminium Silver
Optics	10° - 25° - 40° - 58° - 77°

FREELINE 60 white

H 65 mm	L 602 mm	P 51 mm
LED source	3000 K - 2720 lumens 4000 K - 3180 lumens	
Installation unit x output	48 Vdc 700ma	4 pcs 1 x channel



Code	03.LFB005E 21 anodized aluminium silver	WB 3000 K	10	spot
		WE 4000 K	25	medium
			40	wide
			02	ultrawide
			03	wash

PSU	Remote with Drivenet
Finiture	Anodized Aluminium Silver
Optics	10° - 25° - 40° - 58° - 77°

FREELINE 90 white

H 65 mm	L 884 mm	P 51 mm
LED source	3000 K - 4080 lumens 4000 K - 4770 lumens	
Installation unit x output	24 Vdc 1600ma	4 pcs 1 x channel



Code	03.LFB006E 21 anodized aluminium silver	WB 3000 K	10	spot
		WE 4000 K	25	medium
			40	wide
			02	ultrawide
			03	wash

DIVE SERIES

ON REQUEST

• model 1, 3, 6N:	HUB-IP56 Screw terminals 1 IN / 3 OUT HUB-IP20 Screw terminals 1 IN / 3 OUT	03.LA.131.IP56 03.LA.131
• model 1 and 3:	8-pole underwater cable	0509C113
• model 6N and 12N:	8-pole underwater cable	0509C159

AKHELIOS SERIES

ON REQUEST

• model 1 and 3:	8-pole underwater cable	0509C113
• model 6N and 12N:	8-pole underwater cable	0509C159
• model 6N:	Outer case stay-in-place casting form	03.LA.078.V1
• model 12N:	Outer case stay-in-place casting form	03.LA.059.V1

DONUT SERIES

ONN REQUEST

• all models:	8-pole underwater cable	0509C159
• model 6:	HUB-IP56 Screw terminals 1 IN / 3 OUT HUB-IP20 Screw terminals 1 IN / 3 OUT	03.LA.131.IP56 03.LA.131

HELIOS SERIES

ON REQUEST

• all models:	Outer case IP20 rated	03.LA.190.V1
• model 6:	HUB-IP56 Screw terminals 1 IN / 3 OUT HUB-IP20 Screw terminals 1 IN / 3 OUT length 10 mt - 33 ft length 30 mt - 98 ft length 50 mt - 164 ft length 100 mt - 328 ft Outdoor extension cable M12 M/F 8 pins - cable Ø 6 mm 50m / 164ft length (call for length) Y-BOX IP65 M12	03.LA.131.IP56 03.LA.131 02K001157.10 02K001157.30 02K001157.50 02K001157.100 03.LA.035.50 03.LA.037
• model 9 WH:	Constant current PSU 700mA 9 ÷ 48Vdc - Max. 1 unit 500-1400mA 60W *Push Dimming *DALI *230Vac 500- 1400mA 60W *Push Dimming *DALI *100Vac 2-pole underwater cable	0502T031 0514M240 0514M241 0509C081
• model .d 6:	PSU a corrente costante - Massimo 1 unità PSU a corrente costante 48Vdc 240W IP67 Massimo 4 unità collegate in parallelo Dongle DLC 901 Cavo da esterno a 4-poli 4 x 0,5 mm ² Interfaccia per aggiornamento software DTS Dongle firmware	0502T063 0502T099 03.LA.063.1 0509C152 03.LA.206

DOCTUS SERIES

INCLUDED

• all models:	CONN. M12 MALE 8POLE VOL L=0,46MT	02K001152
----------------------	-----------------------------------	-----------

ON REQUEST

• all models:	Safety cable - 3x600mm - max capacity load 30 kg (66lbs)	code 0521A010
• standard models:	8-pole outdoor cable 8 x 0,25 mm ²	0509C062.PUR
• WH models:	8-pole outdoor cable 8 x 0,25 mm ²	0509C062.PUR
• .d models:	4-pole outdoor cable 4x0,5mm ² Dongle DLC 901 DTS firmware uploader dongle Constant voltage PSU 48Vdc 100W IP67 Constant voltage PSU 240W-48Vdc IP67 ON-OFF	0509C152 03.LA.063.1 03.LA.206 0502T063 0502T099
• 1 led models:	Top hat silver Top hat black	03.LA.246 03.LA.246.14
• 3 leds models:	Top hat silver Top hat black Top hat white	03.LA.247 03.LA.247.14 03.LA.247.06
• 6 leds models:	Top hat silver Top hat black	03.LA.248 code 03.LA.248.14
• 12 leds models:	Top hat silver Top hat black	03.LA.249 03.LA.249.14
• 6 leds models:	Top hat silver Top hat black	03.LA.248 code 03.LA.248.14

BRICK SERIES

ON REQUEST

• all models:	Permanent installation kit IP68	03.LA.214
	Outdoor DMX cable 2 x 0.25 mm ² - Flame retardant (call for length)	0509C158
	Safety cable 3 x 600 mm - BGV-C1 certified	0521A049
	DTS firmware uploader dongle	03.LA.206
• model 12 and 24:	Power supply cable 3 x 1 mm ² (call for length)	0509C160
• model 12:	Filter 10°	0506A101.D12
	Filter 20°	0506A043.D12
	Filter 40°	0506A045.D12
	Filter 60°	0506A103.D12
	Filter 80°	0506A121.D12
	Filter 60°x10°	0506A092.D12
	Filter 10°x60°	0506A048.D12
	Filter 60°x30°	0506A119.D12
	Filter 30°x60°	0506A133.D12
	Barndoor black + Qualicoat Seaside finishing	03.LA.211.15
	Barndoor silver + Qualicoat Seaside finishing	03.LA.211.41
	Barndoor white + Qualicoat Seaside finishing	03.LA.211.06
	Visor black + Qualicoat Seaside finishing	03.LA.230.15
Visor silver + Qualicoat Seaside finishing	03.LA.230.41	
Visor white + Qualicoat Seaside finishing	03.LA.230.06	
• model 24:	Filter 10°	0506A101.D11
	Filter 20°	0506A043.D11
	Filter 40°	0506A045.D11
	Filter 60°	0506A103.D11
	Filter 80°	0506A121.D11
	Filter 60°x10°	0506A092.D11
	Filter 10°x60°	0506A048.D11
	Filter 60°x30°	0506A119.D11
	Filter 30°x60°	0506A133.D11
	Barndoor black + Qualicoat Seaside finishing	03.LA.210.15
	Barndoor silver + Qualicoat Seaside finishing	03.LA.210.41
	Barndoor white + Qualicoat Seaside finishing	03.LA.210.06
	Visor black + Qualicoat Seaside finishing	03.LA.229.15
Visor silver + Qualicoat Seaside finishing	03.LA.229.41	
Visor white + Qualicoat Seaside finishing	03.LA.229.06	
• model 32:	Power supply cable 3 x 1,5 mm ² (call for length)	0509C040
	Filter 10°	0506A101.D18
	Filter 20°	0506A043.D18
	Filter 40°	0506A045.D18
	Filter 60°	0506A103.D18
	Filter 80°	0506A121.D18
	Filter 60°x10°	0506A092.D18
	Filter 10°x60°	0506A048.D18
	Filter 60°x30°	0506A119.D18
	Filter 30°x60°	0506A133.D18
	Barndoor black + Qualicoat Seaside finishing	03.LA.237.15
	Barndoor silver + Qualicoat Seaside finishing	03.LA.237.41
	Barndoor white + Qualicoat Seaside finishing	03.LA.237.06
Visor black + Qualicoat Seaside finishing	03.LA.236.15	
Visor silver + Qualicoat Seaside finishing	03.LA.236.41	
Visor white + Qualicoat Seaside finishing	03.LA.236.06	

FOCUS SERIES

ON REQUEST

• all models:	Constant voltage PSU 48Vdc 100W IP67 (Max 1 unit)	0502T063
	Dongle DLC 901	03.LA.063.1
	DTS dongle firmware uploader	03.LA.206
	Safety cable - 0.3x60 cm - max. capacity load 60 Kg	0521A010
	DMX Power Hub Max. 4 units (1 item per output)	03.LA.227
• model .d.o 1 zoom:	4-pole outdoor cable	0509C152
	Top hat	03.LA.231
• model .d.i 1 zoom:	4-pole outdoor cable	0509C083

VICE SERIES

ON REQUEST

• all models:	HUB-IP20 Screw terminal 1 in / 3 out	03.LA.131
	HUB-IP56 Screw terminal 1 in / 3 out	03.LA.131.IP56
	8-pole outdoor cable	0509C062.PUR






LIGHTING CONTROL SYSTEMS



Architectural light must emphasize, enhance, discover the dimension of what it illuminates. For this reason, it also adds at the ability to illuminate, the control of color and light intensity.





They grant the ability to give three-dimensionality to forms and add dynamic and animation to the static nature of architectural structures. In doing so, they become an integral part of the architecture, complementing its dimensions and uniqueness.

DTS integrates to its projectors, the best light control systems designed to meet any architectural lighting need, from the simplest to the most complex.

PSU	Outputs	24 Vdc 700 mA	24 Vdc 1400 mA	48 Vdc 700 mA
 DriveNet 28 C din 120-240 Vac 50-60 Hz 159.6 x 91.2 x 62.3 mm	2	03.LA.239	---	03.LA.239
 DriveNet 28 Ez 88 x 112 x 295 mm 120-240 Vac 50-60 Hz	2	---	---	03.LA.288
 DriveNet 416 88 x 480 x 497 mm 120-240 Vac 50-60 Hz	4	---	---	03.LA.196
 DriveNet 832 88 x 480 x 497 mm 120-240 Vac 50-60 Hz	8	03.LA.177.V2	03.LA.184.V2	03.LA.177
 DriveNet 1664 131 x 480 x 497 mm 180-240 Vac 50-60 Hz	16	03.LA.195	---	03.LA.198

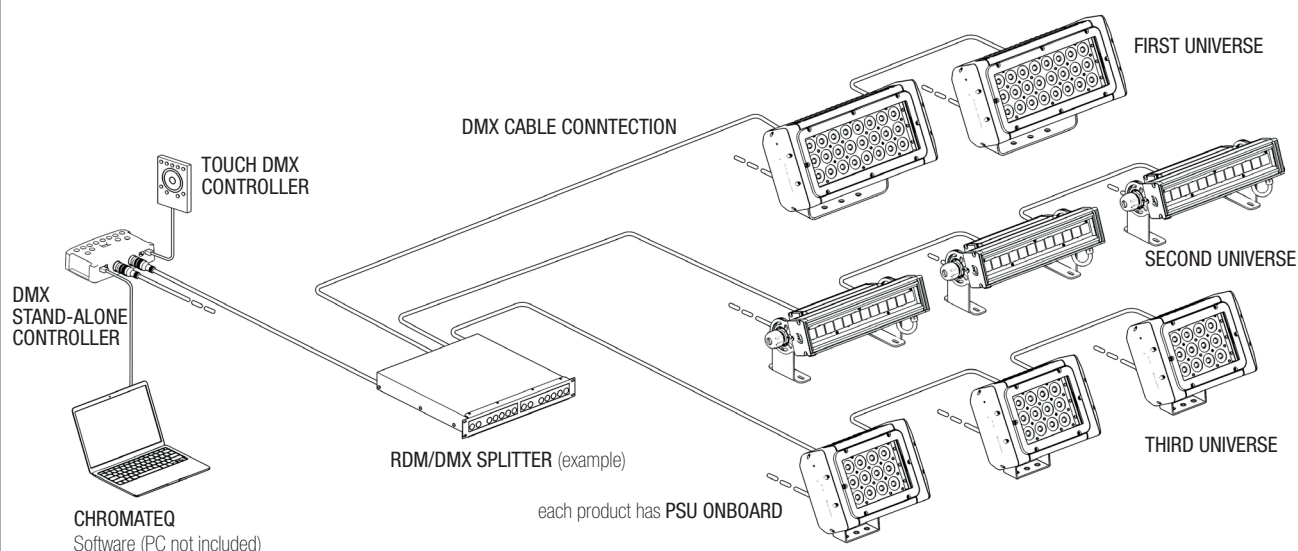
BEWARE: 48 Vdc supply is just allowed only in installation where human entry is forbidden

Products that can be mounted for each output	24 Vdc 700 mA	24 Vdc 1400 mA	48 Vdc 700 mA
Dive 1, Akhelios 1	6 pcs	---	12 pcs
Dive 3, Akhelios 3	2 pcs	---	4 pcs
Dive 6, Akhelios 6	1 pc	---	2 pcs
Dive 12, Akhelios 12, Donut 12	---	1 pc	1 pc
Donut 18	---	---	1 pc

	PSU	Outputs	24 Vdc 700 mA	24 Vdc 1600 mA	48 Vdc 700 mA
	DriveNet 28 C din 120-240 Vac 50-60 Hz 159.6 x 91.2 x 62.3 mm	2	03.LA.239	---	03.LA.239
	DriveNet 28 Ez 88 x 112 x 295 mm 120-240 Vac 50-60 Hz	2	---	---	03.LA.288
	DriveNet 416 88 x 480 x 497 mm 120-240 Vac 50-60 Hz	4	---	---	03.LA.196
	DriveNet 832 88 x 480 x 497 mm 120-240 Vac 50-60 Hz	8	03.LA.177.V2	03.LA.184.V2	03.LA.177
	DriveNet 1664 131 x 480 x 497 mm 180-240 Vac 50-60 Hz	16	03.LA.195	---	03.LA.198

Products that can be mounted for each output	24 Vdc 700 mA	24 Vdc 1600 mA	48 Vdc 700 mA
Doctus 1, Vice 1 (1 Led)	6 pcs	---	12 pcs
Doctus 3 (3 Leds)	2 pcs	---	4 pcs
Hi-Line 30 WH (12 Leds)	2 pcs	---	4 pcs
Hi-Line 30 FC (4 Leds)	1 pc	---	3 pcs
Doctus 6, Helios 6 (6 Leds)	1 pc	---	2 pcs
Hi-Line 90 WH (36 Leds)	---	---	1 pc
Hi-Line 90 FC (12 Leds)	---	---	1 pc
Freeline 30 WH (6 Leds) 1 x channel	4 pcs	---	8 pcs
HELIOS 9 WH (9 Leds) 1 x channel	---	---	4 pcs
Freeline 60 WH (12 Leds) 1 x channel	---	---	4 pcs
Freeline 90 WH (18 Leds) 1 x channel	---	4 pcs	---

STANDARD DMX CONTROL SYSTEM



The integration of Drivenet and the DMX controller system creates a comprehensive solution that offers professional lighting designers significant flexibility and control. Here's a more detailed summary of the advantages these systems bring when used together:
 Key Benefits of the Drivenet and DMX Controller System:

1. Precision Control:

- DMX offers precise control over individual lighting fixtures, enabling designers to fine-tune lighting effects down to minute details like intensity, color, and movement. This level of precision is critical for dynamic environments such as stage performances and concerts.

2. Efficiency:

- The Drivenet system significantly reduces the complexity of cable management by delivering both power and data over a single line, making installation faster and more streamlined. This is particularly advantageous in large venues where extensive cabling can otherwise become cumbersome.
- Centralized control of power and data distribution optimizes energy usage and reduces the risk of connectivity issues that come with multiple individual connections.

3. Scalability:

- Whether used for a small stage production or a large-scale outdoor architectural display, the combination of Drivenet and DMX can scale easily. The system can handle a few fixtures or hundreds of them by simply adding more Drivenet hubs and DMX addresses.
- This scalability is critical for professional setups where lighting needs might evolve or expand over time.

4. User-Friendly Operation:

- Despite the complexity of the technology behind these systems, they are designed to be intuitive and easy to operate, with user-friendly interfaces, making it easier for lighting technicians to control complex lighting sequences without extensive technical expertise. The setup is further simplified by the compatibility of Drivenet hubs with common lighting protocols like DMX and Art-Net, allowing technicians to plug and play with familiar devices.

5. Versatility:

- The system is equally suited for different lighting scenarios: live events, theatrical performances, concerts, or architectural installations. Its versatility makes it a go-to solution for lighting professionals who need to manage diverse and changing lighting setups.

6. Remote Control & Networking:

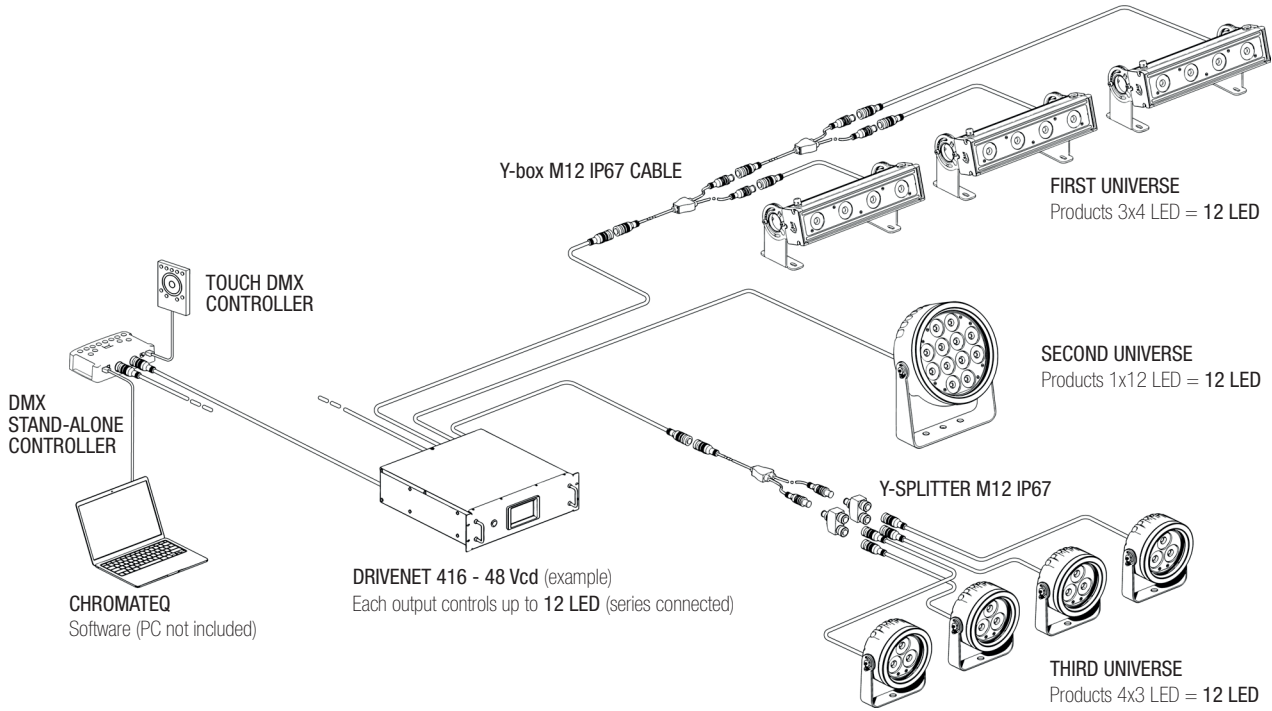
- Remote management capabilities are supported through network-based control (using Ethernet or Art-Net), allowing lighting operators to monitor and adjust settings from distant locations, which is crucial for large venues or outdoor setups where physical access to lighting rigs may be difficult.
- This is especially helpful for large-scale productions or installations where quick, real-time adjustments are needed without physically accessing each fixture.

7. Reliability:

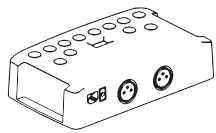
- With DTS Lighting's high-quality components, the system is robust and built for reliability in demanding environments. Drivenet ensures that power and data transmission are steady, minimizing downtime or interruptions, which is vital during live events.

By combining the Drivenet system's power/data distribution capabilities with the DMX controller's detailed control, this solution provides lighting professionals with a powerful toolset for creating dynamic, complex lighting designs. The seamless integration of these systems delivers an advanced, reliable, and efficient solution for any scenario whether it's a theater production, concert, or large-scale architectural lighting installation.

DRIVENET LOW VOLTAGE CONTROL SYSTEM



SYSTEM INTEGRATION PRODUCTS

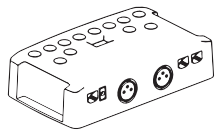


DMX STAND-ALONE CONTROLLER

03.E1333

512 CHANNELS

The DMX Stand-alone Controller is the definitively perfect DMX controller for all type of architectural projects. It can play 1 to 5 zones (scene). Software Chromateq included.



DMX STAND-ALONE CONTROLLER

03.E134

1024 CHANNELS

The DMX Stand-alone Controller is the definitively perfect DMX controller for all type of architectural projects. It can play 1 to 5 zones (scene). Software Chromateq included.

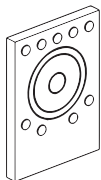
E-PRO DMX STAND-ALONE CONTROLLER

03.E1335

1024 CHANNELS Stand-alone mode: Up to 8 universes / Live mode: Up to 16 universes.

THE E-PRO DMX Stand-alone Controller, includes an Ethernet port in addition to the USB port. This gives long distance access and communication with the device anywhere on a local network (LAN & WLAN) or on the internet (via WEB Server).

Software Chromateq included.



TOUCH DMX CONTROLLER

03.LA.256

1024 CHANNELS Stand-alone controller

The TOUCH DMX Lighting control interface comes with a sleek design and visually intuitive multifunction touch-sensitive surface for all your indoor installations.

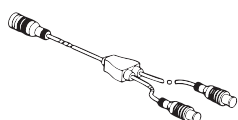


Y-SPLITTER M12 IP67

03.LA.209.S

1 x 8 contacts Male connector - 2 x 8 contacts Female connectors

The Y-Splitter M12 IP67 is an accessory to connect on series two or more fixtures facilitating cabling while maintaining the IP67 rating.



Y-BOX M12 IP67 CABLE

03.LA.037

1 x 8 contacts Male connector - 2 x 8 contacts Female connectors

The Y-Box M12 IP67 Cable is an accessory to connect on series two or more fixtures facilitating cabling while maintaining the IP67 rating.

