



The PHOS 160 pole mount is equipped with a new, powerful generation of LEDs. With an output power of 160 watts and a luminous flux of 9,600 lumens, the projector is suitable for large-format projections over medium and long distances. The housing with its IP65 protection class allows it to be used indoors and outdoors - even in dusty industrial plants or near the coast (with optional offshore coating). As with all Derksen projectors, the motif is durable and can be changed without tools. For mounting on surfaces (wall, ceiling, etc.), the PHOS 160 version is available.

Construction

housing: aluminium, stainless steel, powder coated
 weight (standard equipment): 3.8 kg | 8.38 lbs
 IP-rating of the housing IP 65

Operating Conditions

application area indoors and outdoors, mounting on poles
 ambient temperature: -30°C - +35°C
 cooling: active, with a fan, 31 dBA

Light Source and Optics

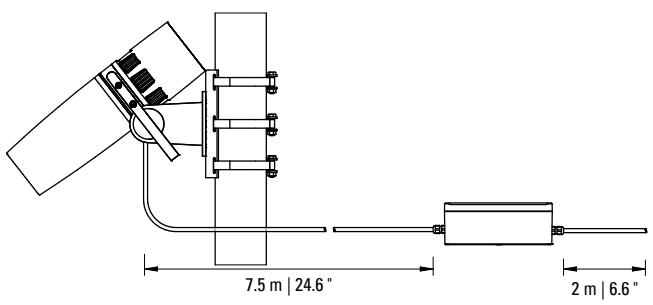
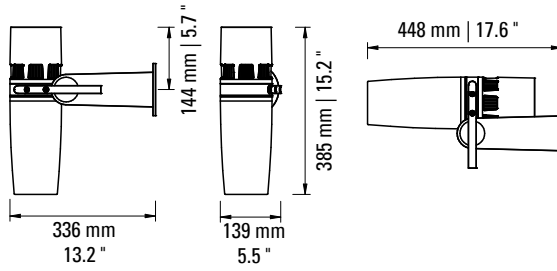
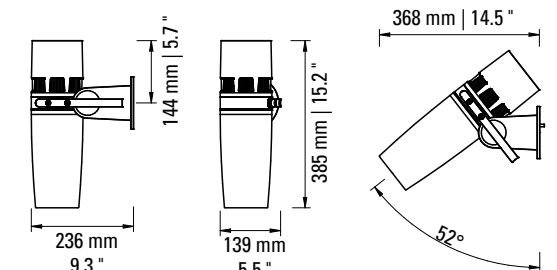
light source: High Power LED, 160 W
 luminous flux of the projector: 9,600 lumens
 efficiency: 56 lumens / watt
 colour temperature: 6,300 – 6,700 K
 colour rendering index: Ra >70
 estimated lifetime of the LED (L70): 35,000 operating hours
 projection lens: Standard Lens, f=85 mm (included)
 gobo size / image size: Ø 50.0 mm / Ø 40.0 mm
 photobiological safety (IEC62471-5:2015, EN62471-5:2015): RG-2

Electrical Specifications

input voltage: 100 - 240V AC, 50/60 Hz
 power consumption: 170 W
 power factor: 0.92 cos. φ
 electrical protection class: I
 max. number of devices per circuit breaker B16A/C16A: 4/6
 available lighting control options: on demand

Item No.: 20854020 (black)

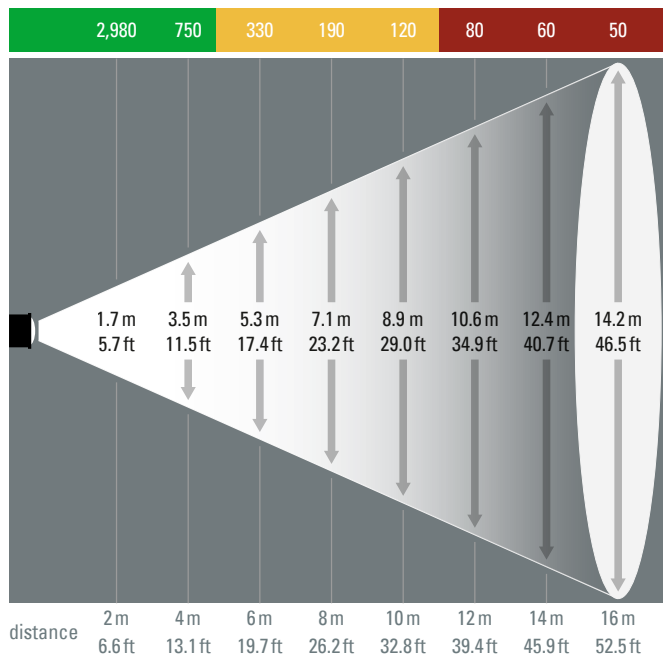
Additional Accessories: individual glass gobo, made with your digital artwork, Extra Wide Angle Lens, f=45 mm, Standard Lens, f=85 mm (included in delivery), Telephoto Lens, f=135 mm, Extra Telephoto Lens, f=150 mm



PHOS 160 pole mount – Photometric Diagrams

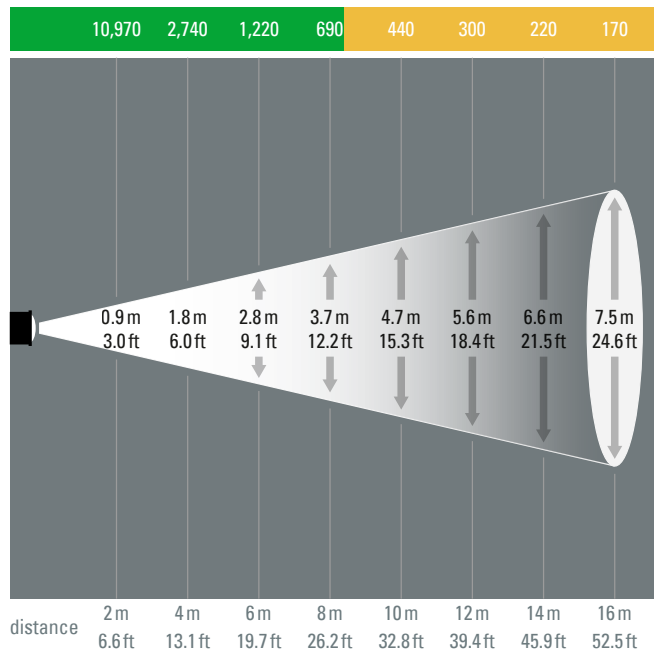
PHOS 160, Extra Wide Angle Lens, f = 45 mm, 48°

illuminance [lux]



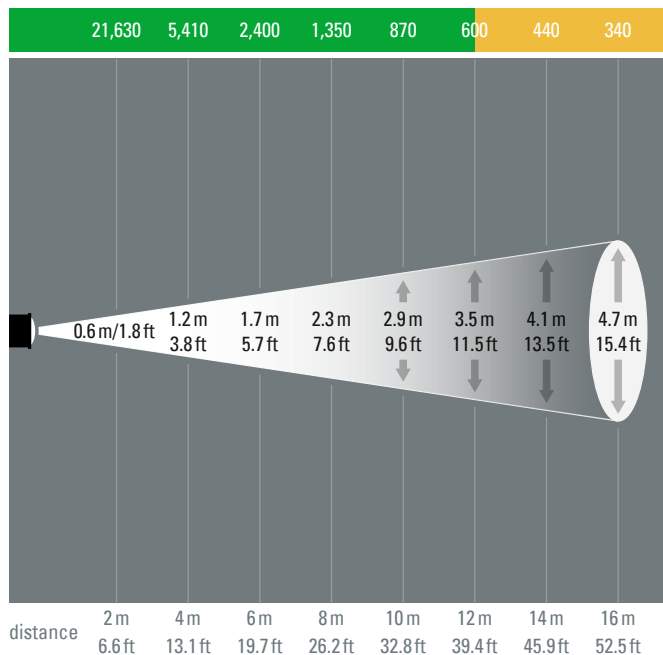
PHOS 160, Standard Lens, f = 85 mm, 26°

illuminance [lux]



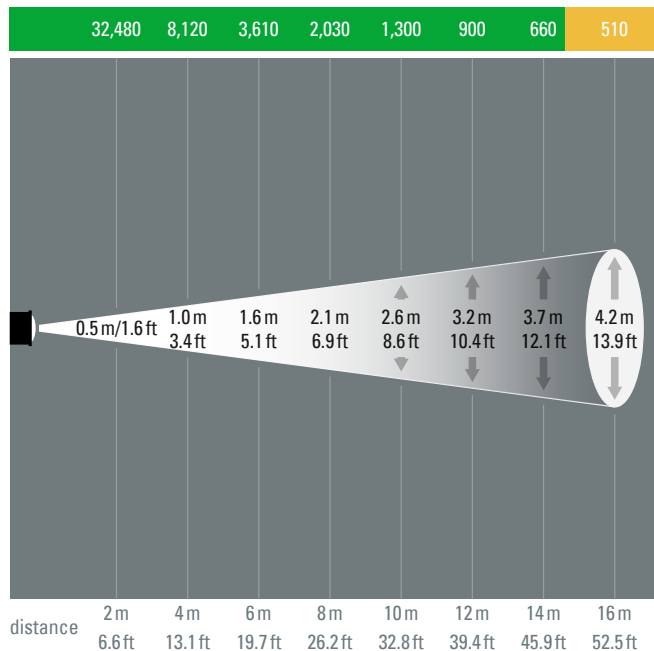
PHOS 160, Telephoto Lens, f = 135 mm, 17°

illuminance [lux]



PHOS 160, Extra Telephoto Lens, f = 150 mm, 15°

illuminance [lux]



Brightness Colour Coding:

- = with normal ambient lighting, suitable for coloured motifs
- = in low-light environments, for motifs without colour
- = only recommended in dark environments

- The results shown are approximate values. The result may differ slightly in reality.
- The projection sizes indicate the maximum diameter that can be projected with a Ø 40 mm image.
- The projection motif is circular and fills the image area of the gobo. Other objects, e.g. rectangles or texts are fitted into the circular projection area.
- The projection is at right angles to the projection surface.

Detailed projection calculator at: www.derksen.de

derksen®
lichttechnik

Derksen Lichttechnik GmbH
Johannes-Rau-Allee 4
45889 Gelsenkirchen
Germany

Tel.: +49 209 98070-0
info@derksen.de
www.derksen.de