

104-1004 Antenna 6dBi Outdoor

Ver: 1. Feb 2, 2024



Product description

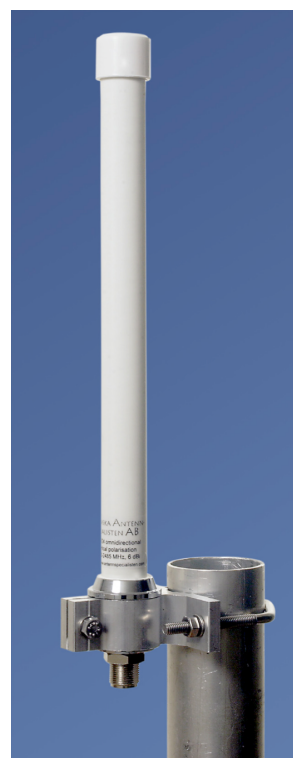
This antenna provides 6 dBi gain with very broad coverage in all directions. It is suitable for both indoor and outdoor applications, but designed primarily for outdoor use. This antenna is lightweight and features an aesthetic white, fiber glass radome.

Designed for all weather operation, 104-1004 features a robust body and mounting kit that will withstand the forces of weather over time.

The antenna is supplied with a mast mount kit. This allows the antenna to be positioned for optimal performance. The mount can also be screwed directly onto a façade or the like.

104-1012 can be mounted to a 35 mm (1.4") to 50 mm (2") diameter masts.

The N female connector allows for the use of LumenRadio's outdoor rated coaxial cables without the need of any adapters.



Electrical specifications

Frequency	2400 – 2485 MHz
Gain	6 dBi
Polarization	Vertical
Radiation pattern	Omni directional
Maximum input power	20 W
Impedance	50 Ohms
VSWR	≤1.5:1
Lightning protection	DC Ground

Mechanical specifications

Connector	N female
Mounting mast size (dia.)	35 to 50 mm (1.4 to 2.0 in.)
Radome material	Fiber glass
Operating temperature	-40° to 85° C (-40° to 185° F)
Dimensions	330 x 23 mm (dia) (13.0 x 0.9 in.)
Weight (incl. mount)	355 g (0.8 lbs.)
IP rating	IP67
RoHS compliant	Yes

104-1004 Antenna 6dBi Outdoor

Ver: 1. Feb 2, 2024



RF antenna pattern

